

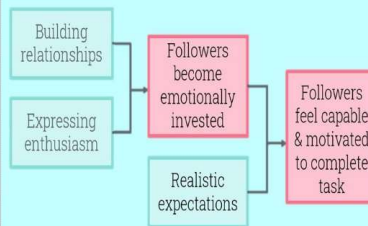
Leadership Profile: Colleen Patton



Allison Coil



Original Draft of Model



Final Draft of Model

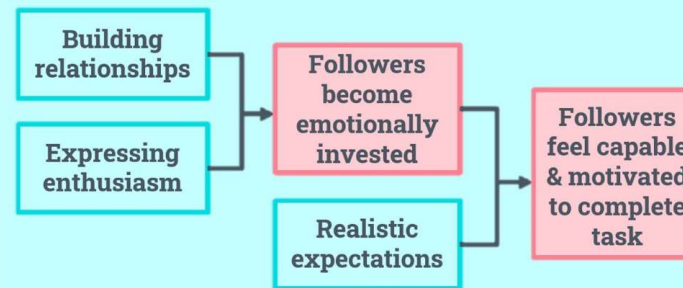


Photo of Leader



Introduction & Background

Colleen Patton has been my dance and silks teacher since 7th grade. We've developed a close relationship as I've taken more classes with her than with any other teacher. Now, I am her long-term substitute when she has to be out of town for her other job. Colleen graduated from Mizzou with a B.S. in Education and a B.A. in Spanish, and since then she has worked as a Spanish teacher, dance teacher, freelance performer, and cruise line aerial trainer.

Summary of Leadership Characteristics

Colleen is a well-loved instructor at a number of dance studios, largely due to the personal connections she creates with students and the fun, upbeat energy she brings to class. In effectively teaching and managing classes, the main leadership actions that Colleen takes are Building Relationships, Expressing Enthusiasm, and having Realistic Expectations in order for students to become emotionally invested and feel capable and motivated.

I took a lot of time to work on my original model, so when it came time to modify it, I felt that all I really needed to do was make some elements stand out more and make the colors match the rest of the poster.

Building Relationships

- Strong Relationship focus
- Interested in students as people, talks to them about their lives, interacts with them on social media
- Builds relationships between students through partner/group work
- Assesses and meets the needs of individual students
- Employs different strategies with different types of students

Expressing Enthusiasm

- Super passionate about what she does & plays it up to get students excited
- Begins class with a statement of how excited she is to get started
- Encourages students to become more engaged
- Unafraid to be silly or "childish"
- Creates a fun class environment where students feel free to be themselves

Realistic Expectations

- Understands that her students aren't experts
- The end product won't be perfect, and that's okay - the point is that they try their best & learn
- Honest with students
- Doesn't sugarcoat it when things go wrong, but doesn't stress out or blame students
- Conscious of the stakes and communicates them

How has Colleen influenced me?

Colleen has been perhaps the most influential person in my life over the years, so it's natural that I model my own leadership style after her. In my own classes or when I substitute teach for her, I'm constantly thinking of her for guidance when I feel lost or stuck. I admire her immensely, and I try to emulate her leadership strengths whenever I can. I look up to her a lot as someone who is strong, motivated, and fun to be around. She serves as an inspiration to me not only as a leader, but also as an artist, athlete, and human being.

Barry B. Benson – An Unbelievably Good Leader



Drew Edelstein,
Webster University



Introduction – Barry B. Benson

Barry B. Benson is an unlikely leader, and a massively interesting one. Initially slated to be just another worker bee in his hive, a crisis of conscience inspired him to explore the world at large. His foray outside the hive would see him establish a strong bond with the human world, and become inspired to benefit bees at large after seeing them exploited for their honey. After a successful court case, he realized that his actions inadvertently caused bees to stop producing honey. Barry admitted his fault before seeking to save the world, inspiring bees to resume honey production and allowing for the world to prosper even better than it had before, with humans now properly sharing the world with all the other species on Earth.

Definitions from Model

The foundation of this model's thinking comes from the idea that great leadership comes from a mix of ideologies. In Barry's case, he accomplishes a foundational shift in the structure of the film's society. This could only be achieved due to the variety of approaches he applied in order to accomplish his goals.

Definitions from Model (cont.)

Barry leads with a blend of interpersonal and political ideals. His interpersonal skills provide him with an innate value and consideration for those around him; he is open to the needs of anyone he meets, and he is willing to confront his faults if it provides him the opportunity to improve the lives of others.

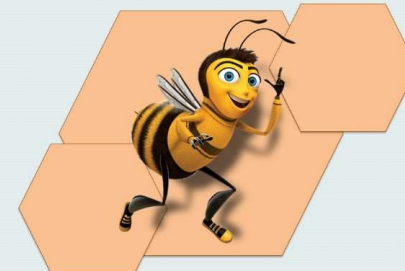
Definitions from Model (cont.)

Barry also incorporates strong traits of political leadership. He pursues change through institutional means, using his intelligence to advocate for the needs of others and fight institutional oppression. Were either aspect of his leadership tendencies diminished, he couldn't have achieved his goals.

Leadership Model Initial Draft



Final Leadership Model



Summary of Leadership Characteristics

Barry's synthesis of leadership styles is remarkably well realized. His desire to advocate for others is facilitated through his knowledge of institutional structure, and without it, he wouldn't be able to realize the empathetic and tolerant nature of his personality. It is only through the realization of both major aspects of his person that Barry is able to accomplish his goals, and enact groundbreaking social change.

Barry's Influence on Me

Barry is a great example of how inspiration can come from anywhere. I believe anyone seeking to lead should maintain strong personal values, and seek to enact them in their lives. In addition, I think that seeking to find your values represented in the world at large is an important part of maintaining a broadly applicable perspective. By seeking inspiration from a source as unorthodox as Barry, it reinforces my belief that meaningful ideals can (and should) be constantly seen all throughout the world. In addition, the strengths of Barry's ideals and actions greatly mirror that which I aspire to as a leader; leading by example and in accordance with your ideals is the only way to be a truly authentic and groundbreaking leader, in my opinion.

References

- Komives, S. R., Lucas, N., & McMahon, T. R. (2013). *Exploring Leadership* (Third ed.). San Francisco, CA: Jossey-Bass.

Captain John Miller Leadership Profile



Nick Gallagher-Junior



Introduction of Captain John Miller

He was an English Composition teacher for 11 years at Thomas Alva Edison High School in Addley, PA. He joined the Army Rangers in 1942. Served in Tunisia for 1 year, before taking an Officer position in Operation Torch in Italy. On June 6th, he would lead C Company of the 2nd Ranger Battalion onto Omaha beach, before taking his team on a search and rescue mission in enemy territory.

Summary of Leadership Characteristics

He is a Transformational Leader. Deals with long term goals, ethics, and emotions. Assesses his followers' needs. He is an Analytical-Driver. He made it to his current position for his intelligence and ability to analyze situations. While at certain points of the film he seems task oriented. He knows that he needs men that will trust him, men who will fight together because of the brotherhood they share.

In the box above, you will see the qualities that make up Capt. John Miller's leadership.

Empathy

During key points in the film, his stern exterior will open and show his empathetic nature. Such as when breaking the news to Private Ryan, or when he talks to his team after the death of Private Caparzo.

Respect

Captain Miller does not demand respect, and there are multiple points in the film where he shows that it is a two-way street. He works hard to EARN respect.

Experience

Not only is Captain Miller trained as an Officer, but he also has past leadership experience as a baseball coach, and an English teacher. Beyond that, he had previous military experience prior to the events of the film.

Loyalty

His entire leadership model would crumble without the element of loyalty. Knowing that at the end of the day, his men will have his back.

How has this person influenced You?

Captain Miller has influenced me by showing genuine selflessness. As described in the film, his only goal is to save Private Ryan in order to spare his mother from receiving another folded flag, and even in the heat of battle, he sticks to that goal, sacrificing his own life to achieve it.

Charlie Kelly



Parker Guterman
Webster University



Introduction of your Leader

Charlie Kelly is a character from the TV series *It's Always Sunny in Philadelphia*. He is a janitor at the bar he and his friends own: Paddy's Pub. He has a high school diploma. Charlie has singlehandedly written, composed, and directed a musical: *The Nightman Cometh*

Summary of Leadership Characteristics

- **Clear communication:** one of the only people able to direct his group of friends
- **Music skills:** shown to play harmonica, piano, and saxophone
- **Flexibility:** was the only one of his group to make it to a movie premiere when the whole town was shut down and full of traffic
- **Problem solving:** always passes health inspections despite friends' inability to keep Paddy's up to acceptable standards

My Leadership Model: four large aspects come together to achieve a goal

Clear communication

Charlie typically works with his friends, who all have poor attitudes. He knows how to communicate with them to get them to all work together.

Music skills

While his songs can't solve every problem, the enthusiasm and creativity he has amplifies his music and is imperative to his effectiveness as a leader.

Flexibility

When plans change on the fly, Charlie is pliable enough to work around new obstacles. His flexibility also means he can easily compromise with his team.

Always prepared

Charlie always has tools or costumes on hand to aid his friends. He can also easily adapt to plan changes and can think quickly to solve problems that arise.

References: Rob McElhenny, creator. *It's Always Sunny in Philadelphia*. RCG Productions and FXX, 2019.

How has this person Influenced you?

Charlie has influenced me to have more fun when leading, as he doesn't tend to take things to incredibly seriously. He also brings a lot of energy to the table, which helps encourage his group to succeed. This is something I try to do more.

In a separate and very literal sense, Charlie has inspired me musically. I ended up learning to play some of the songs he wrote in the show in real life.

Jameela Jamil Leadership Model



Ramona Johnson Webster University Leigh Gerdine School of Fine Arts



Introduction of your Leader

Jameela Jamil is an actress, activist, and advocate. The acting role she is most known for is Tahani Al-Jamil in *The Good Place*. Before acting she taught English for a bit and was the host of a radio show.

She has created a platform/movement called *I Weigh*. The Instagram bio sums it up well, "*I Weigh* is about radical inclusivity, so that no one feels alone. Our job is to amplify, advocate, and pass the mic."

She also (very recently) started a podcast called *I Weigh* with Jameela Jamil. It's all about mental health, shame, and stigma and how humans work through those things and how to help yourself and others.

Definitions from Model

Jameela, over the course of her life, I believe, has developed a lot of **grit**. I think the grit she has compliments and nurtures her strong motivation to make change. Her **honesty** is a part of her foundation for leadership because it is a big part of who she is and allows her to build mutual respect.



Definitions from Model

All of this stems from her **compassion** towards others and her want to create spaces where people can feel safe and accepted. Jameela's message is incredibly focused on **inclusivity**, and it allows her to be heard and accepted in more places

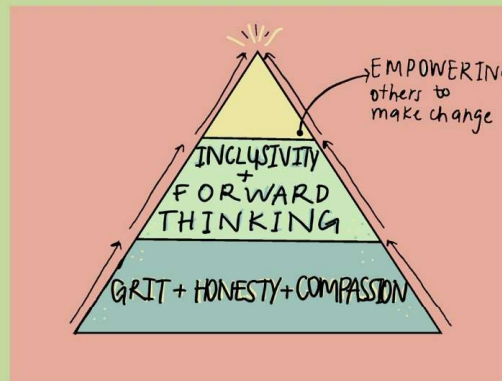


Definitions from Model

Jameela is quite a **forward-thinking** person, which allows for her platform to continuously grow and expand

All of these traits build to her empowering others to make change.

DRAFT OF LEADERSHIP MODEL



FINAL LEADERSHIP MODEL

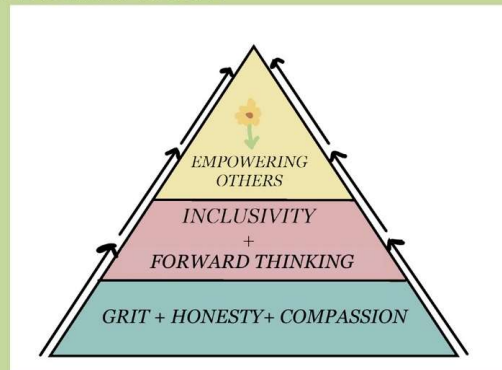


Photo of your Leader



Summary of Leadership Characteristics

Jameela's main leadership characteristics can be found in the model and explained in the definition sections.

She is an excellent example of a transformational leader. Transformational leadership puts emphasis on emotions, values, ethics and standards. Her message and platform is focused on inspiring and empowering others to feel good about themselves, recognize that in others, and to make change in their lives.

How this leader has influenced you

The way that Jameela is incredibly honest and authentically herself, encourages me to do the same and value connecting with others rather than worrying about maintaining an image of composure.

She is a strong advocate against body shaming and diet culture products marketed towards people in society who are expected to be thin. This has motivated me to become more educated and outspoken on the topic(s) as well.

As much as she is a great leader, she also is aware of her limits and that mistakes are inevitable. Those are things that I am trying to learn and accept of myself so it's nice to see her doing so.

CAPTAIN MARVEL'S MARVELOUS LEADERSHIP



SHAELEIGH PARSONS, WEBSTER UNIVERSITY



FIRST DRAFT



UPDATED MODEL



SUMMARY OF CHARACTERISTICS

CAPTIAN MARVEL USES STRENGTH, TEAMWORK, COMMITMENT, AND SELFLESSNESS TO CAUSE SOCIAL ACTION. COMMITMENT AND TEAMWORK WERE PAIRED BECAUSE OF THE COMMITMENT IT TAKES TO BE A GOOD TEAMMATE. STRENGTH AND SELFLESSNESS WERE PAIRED BECAUSE STRENGTH WITHOUT SELFLESSNESS OFTEN LEADS TO ABUSE OF POWER.

LEADERSHIP STYLE

CAPTIAN MARVEL COULD BE CONSIDERED AN EXPRESSIVE DRIVER. SHE FOCUSES ON THE PEOPLE SHE IS HELPING, BUT ALSO HAS TO REMAIN TASK FOCUSED TO COMPLETE HER MISSIONS.

PERSONAL INFLUENCE

CAPTIAN MARVEL IS ONE OF MY FAVORITE LEADERS BECAUSE OF HER NEED TO SERVE HER COMMUNITY. EVERY LEADERSHIP POSITION SHE HAS HAD PROTECTED VULNERABLE COMMUNITIES WHEN THEY COULDN'T PROTECT THEMSELVES. HER MOTIVATIONS COME FROM A NEED TO DO GOOD, NOT FROM A SELFISH REASON. SHE IS A GREAT EXAMPLE OF FEMALE EMPOWERMENT.

INTRODUCTION

CAPTIAN MARVEL IS A CHARACTER FROM THE MARVEL CINEMATIC UNIVERSE. SHE WAS AN AIR FORCE PILOT DURING HER TIME ON EARTH. AFTER BEING LIED TO BY THE KREE, SHE THEN WENT ON TO STOP THE KREE INVASION OF EARTH, FIGHTING AGAINST HER FORMER FAMILY. SHE NOW PROTECTS SPACE FROM VILLIANS.

I UPDATED THE MODEL BY MAKING THE **ARROWS** THICKER SO THAT THEY ARE EASIER TO SEE.

PHOTO FROM GOOGLE PHOTOS

Robin Roberts' Leadership Model



By: Taryn Banfield



First Draft of Leadership Model



Final Leadership Model



Photo of Robin Roberts



Summary of Robin's Leadership Characteristics

- Leadership is an ethical process of people coming together to create positive change
- Human Resource Oriented – emphasizes the importance of people and is very supportive and empowering of those around her
- Supportive expressive – maintains warm and friendly relationships and ensures the well-being of others. She is a good listener who presents positive ideas and focuses on people and feelings

How Robin Roberts has Influenced Me

Robin Roberts has faced many obstacles in her life, yet she continues to remain positive and focuses on others. She is less about the destination and more about the process, helping to make me appreciate the journey and focus less on the outcome. Robin is also very much a people-person and so her leadership approach makes me think less about myself and more about the affect that my actions have on others.

Introduction of Robin Roberts

Robin Roberts is a TV reporter and anchor, most known for her work on Good Morning America. She received a degree in communication from Southeastern Louisiana University. As a black, gay, woman, she represents minority groups and fights for equality. She is also a survivor of breast cancer and was diagnosed with myelodysplastic syndrome, working to bring public awareness to the condition. In addition, her hometown, Pass Christian, along with surrounding areas were devastated by Hurricane Katrina, and she not only started an initiative called "GMA Gets it Done" to help in relief but also helped on-site.

The background on the final leadership model is from Hurricane Katrina because it played a major part in Roberts' life and it emphasizes that leadership can still create positive change in negative situations. Positive change is the core that the surrounding characteristics come together to form.

References

- ABC News, ABC News Network, abcnews.go.com/GMA/video/2005-robin-roberts-relives-emotions-hurricane-katrina-33160953.
"Robin Roberts." *Biography.com*, A&E Networks Television, 16 Apr. 2020, www.biography.com/personality/robin-roberts.

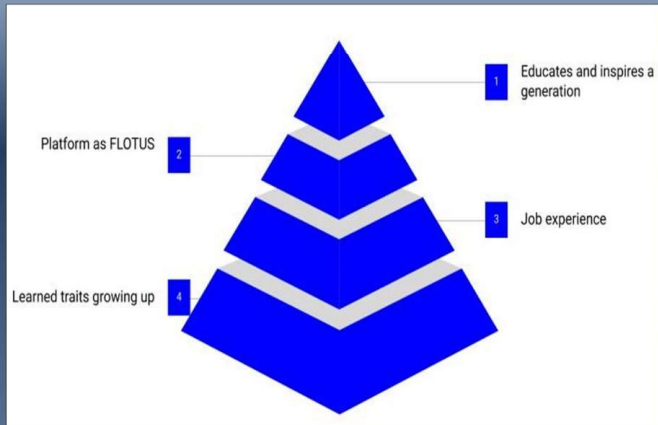
Conclusion – Inspiration Moving Forward

Robin Roberts embodies leadership ideals through her experiences in overcoming adversity (discrimination, illness, natural disaster, etc.). Overall, Roberts is able to show that effective leadership is not only about the outcome, but also about the process. As she has said "Life is not so much what you accomplish as what you overcome". When a leader takes time to create nurturing and friendly relationships it will benefit the group as a whole. Being humble, optimistic, and courageous allows for the group to overcome obstacles and create positive change.

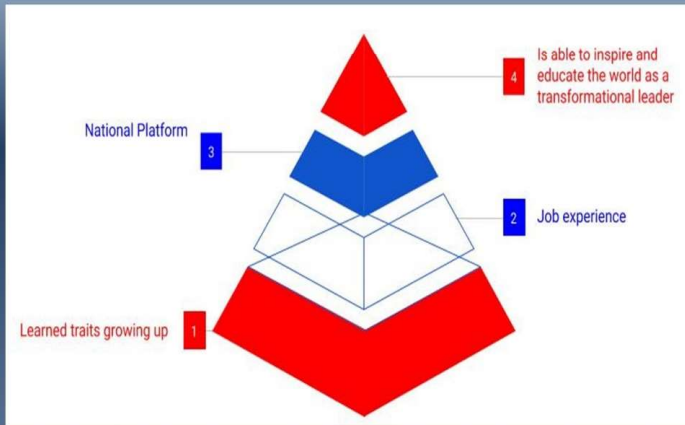
Michelle Obama



By Tori Cichelero



First Draft



Final Model

Leadership Styles

•**Transformational leadership style:** Michelle uses her life experiences to inspire and motivate people she has relationships with. Her visions and ideals inspire and influence the world.
 •**Supportive expressive:** Michelle has high empathy, she communicates well with different groups of people, she is supportive, ambitious, influential and always focuses on the big picture.
Human resource frame: She develops relationships and works with organizations to empower and educate the people.

How has this person Influenced You?

Michelle Obama is my role model because she is vocal and promotes change for things that matter. Her words and actions have inspired me to not just fight for people at the law-changing level, but to also form relationships and be present in the lives' she is trying to change. Her effort to unite the community and bring justice to all has given me hope in humanity. She makes me proud to be a woman and I am so thankful for all she has accomplished.

Major Accomplishments Before National Platform

- Michelle Obama graduated from Princeton University and Harvard Law School
- Became an associate at the law firm Sidley and Austin
- Was founder and executive director of Public Allies Chicago
- Became executive director and then Vice President for community affairs at the University of Chicago Hospital

Major Accomplishments As FLOTUS

Launched the Let Girls Learn Program

This government initiative aimed to help girls around the world go to school and get a quality education.

Lead the Let's Move Program

This campaign encouraged a healthy lifestyle in children by promoting physical activity and giving better access to healthy food.

Launched United We Serve

In 2009, Michelle began United We Serve to encourage Americans to take place in service projects and strengthen our national morale.

Started the Reach Higher campaign

This program was intended to inspire students (low-income in particular) to continue their education past high school in either a program or college setting.

Launched Joining Forces

This program was created to support service members, veterans, and their families through mental health access and employment opportunities.

Her Book "Becoming"

Her book inspired and gave guidance to young people who want to be leaders in our world. She mentioned the importance of serving your community, having dignity and confidence, and continuing to evolve as a leader over time.

Inspiring Quotes

At the DNC 2012: "Success isn't about how much money you make, it's about the difference you make in people's lives."

At a campaign rally in LA: "We need to fix our souls. Our souls are broken in this nation. We have lost our way. And it begins with inspiration. It begins with leadership".



Merlin Leadership Profile

By: Cas Waigand - Journalism Major

This Photo by Unknown Author is licensed under CC BY-SA



WHO IS MERLIN?

- Name: Merlin
- Lives in: Camelot
- Education: A lot of his magic is self taught from books
- Key position: servant to prince Arthur
 - Key Role: Destined to protect Arthur
- Contributions: While his actions are generally unappreciated by others in Camelot (for magic is outlawed), Merlin is a continuous helping hand for Arthur and others in the kingdom. Examples of his "contributions" include:
 - Stopping an evil sorcerer from killing Arthur
 - Healing Gwen's father (who had fallen deathly ill)
- Without Merlin, Arthur never would have become King of Camelot, and so he would not have been able to protect the kingdom from the evil sorcerous Morgana.

WORKS CITED

- "Magical Clipart Magic Hat - Cartoon Magic Hat - Png Download (64127000) - PngClipart.com" www.pngclipart.com/2006/04/12/magical-clipart-magic-hat-cartoon-magic-hat.png/
- "Merlin." IMDb. IMDb.com, 20 Sept. 2008. www.imdb.com/title/tt1111111/characters/nm1111111/

Above, there is a magic, a wand and a hat. The beginning of the leadership process is symbolized by the wand. You cannot make magic without the right tools. In the same way, one cannot be a good leader without the right mindset. The "magic" symbolizes action. Once you have the right mindset and plan, you can take action. Similarly, you can use a wand to make magic. The hat symbolizes outcome. If the magic worked, the outcome should be what you expect. Similarly, if you made a careful plan and followed through on the action, the outcome will (likely) be what you expect. If not, you can reflect on what went wrong and try again.

DEFINITIONS:

TASK ORIENTED: A person who is more task oriented focuses on the details of the project and works to compete it efficiently.

RELATIONSHIP ORIENTED: A person who is more relationship oriented tends to focus on the people in the group (their strengths, weaknesses, and goals)

LEADERSHIP CHARACTERISTICS

- Behavioral Style: Supportive
 - In most episodes, Merlin is making decisions with the intent to help others. Sometimes, the decisions are a little too emotional and backfire, but all his actions are done with the best of intentions. If he does make a mistake, he is quick to accept this fact and try to make it right.
- Elements of "First Follower"
 - While many of Merlin's actions do, in fact, lead the young prince Arthur to his destiny, Merlin may appear like a loyal first follower to anyone else. His faith in Arthur's abilities strengthened him in many situations.
- Transformational leadership
 - At the transformational leadership model highlights, transformational leaders and the people they work with are bound together and everyone has really grown by the end of the process. Transformational Leadership is also concerned about emotions and long term goals, both of which Merlin focused on.
- Task/Relationship orientations
 - Merlin is very strong in his relationship orientation. This orientation is so strong, in fact, it sometimes leads him to make mistakes in his tasks. However, he is always quick to right his mistakes, and he tries not to lose sight of his overall goal.
 - Example of Application: Season 1 Episode 5, an evil sorcerous poisons Camelot's water. Merlin's close friend Gwen wakes up to find her father (who is her last relative) ill from the poison. Merlin finds a magical cure for her father. His kindness backfires when Gwen becomes accused of sorcery. He works to defend her from this claim.

DEFINITIONS:

SUPPORTIVES: As we learned in class, a person who has a supportive behavioral style tends to value people and relationships in the group.

FIRST FOLLOWER: As we have seen and discussed in class, a leader is not a leader without a "first follower." Until somebody puts their faith in the leader and their vision, the leader will have a difficult time reaching their goal.

APPLICATION/INFLUENCE

- Merlin's kindness and compassion for others is something to be applied in the real world. Looking back and going forward, I hope my mindset is always that of "How can I help this person/these people?"
- However, Merlin's shortcomings also provide a guide when it comes to application. Sometimes, Merlin was so concerned for his friends that he jumped into situations without thinking. This often led to further trouble. This, I hope, will serve as a caution. It is possible to be both compassionate and logical, and I hope to take the time and think actions through. This forethought could lead to the best solution for the individual I want to help.
- Merlin really had a strong humility about him. He was a naturally gifted sorcerer who could have probably gained fame very early on for himself. Instead, he used his gifts to help others. While we do not have magical talents, everyone does have a gift (something they are passionate about and good at). I hope to keep his humility in mind and use these gifts to help others, not just myself.

Alexandria Ocasio-Cortez



Gabby Buchholz, Webster University



Introduction of your Leader

Alexandria Ocasio-Cortez (commonly referred to simply as AOC) is a Representative in the United States Congress, serving for New York's 14th Congressional District.

Her victory in the 2018 Democratic primary elections is seen as one of the biggest political upsets in recent history. She beat 10-term incumbent Joe Crowley, who held endorsements from many New York elected officials. She was only 29 years old.

Definitions from Model (if necessary)

This poster is designed as a process explanation. What that means is there is a central idea and there was some kind of process that went into exploring that idea. Lorem ipsum dolor sit amet, consectetur adipiscing elit. Praesent nibh augue, varius eu erat vel, vehicula hendrerit lectus.



Definitions from Model (if necessary)

This poster is designed as a process explanation. What that means is there is a central idea and there was some kind of process that went into exploring that idea. Lorem ipsum dolor sit amet, consectetur adipiscing elit. Praesent nibh augue, varius eu erat vel, vehicula hendrerit lectus.



Definitions from Model (if necessary)

This poster is designed as a process explanation. What that means is there is a central idea and there was some kind of process that went into exploring that idea. Lorem ipsum dolor sit amet, consectetur adipiscing elit. Praesent nibh augue, varius eu erat vel, vehicula hendrerit lectus.

Draft of Leadership Model

1. Find and determine your goals and ideals. Embody them in all that you do.
2. Adapt to the tools around you, like social media, and use them to achieve your goals.
3. Most importantly, fight for your ideals. Even when it doesn't seem worth it or is difficult, persevere.



Gabby Buchholz



Summary of Leadership Characteristics

- Determined
- Strong-willed
- Good listener
- Adaptive
- Resourceful

How has this person Influenced You?

AOC inspires me with her drive, perseverance, and humility towards others. From her background she is experienced in hardships and always talks with others to learn about their own experiences. She defied multiple odds against her and she is someone who is changing the political game in the best way.

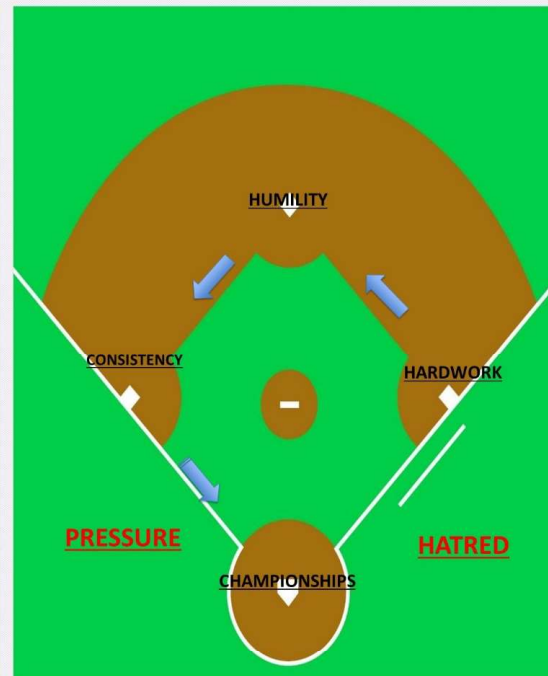
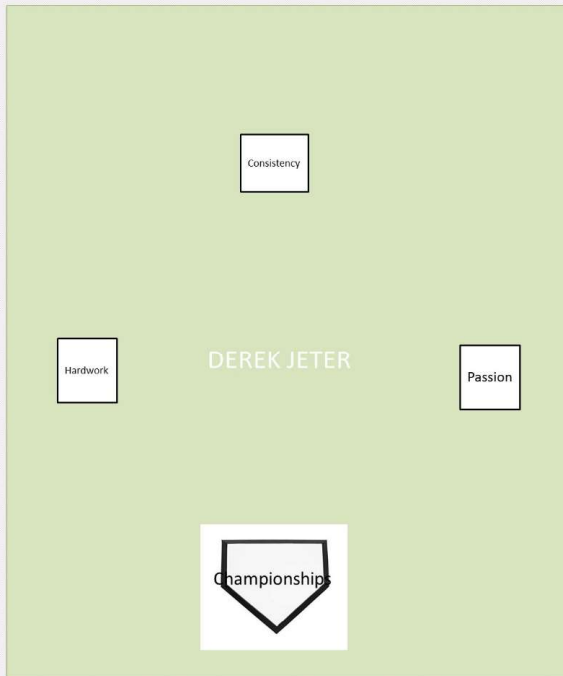
Final Leadership Model



The Captain's Way



Jordan Smevoll
LEADS Program, Webster University



Leadership Qualities

1st Base: Without Jeter's hardwork and dedication, he could not lead a team of 25 other guys
 2nd Base: As a captain, he could never get to high or low while playing
 3rd Base: "Your best ability is your availability"
 Home Plate (Championships)- he put all these traits together and won 5 Championships
 Outside Factors (Pressure and Hatred)- being Captain of the Yankees came with a lot of Pressure from Yankee fans and Hatred from fans of all other teams

How has this person influenced You?

As a baseball player myself, Jeter is admirable because of what he did and how he carried himself. Playing in New York, he had to deal with so much pressure from his own fans and hatred from everybody else because no one outside the Yankees likes the Yankees. He used his background of hardwork and humility and showed much consistency during his career, never letting the pressure exceed the pleasure of playing the game.

Introduction

Derek Jeter is a former major league baseball player for the New York Yankees. During his career, he was the captain of the most iconic franchise in sports and led them to 5 World Series titles' during that time. He was a 14-time All-Star and a 1st-ballot Hall Of Fame selection in 2020. After he retired, Jeter shifted his focus to the business world starting *The Players Tribune*. Currently, he is the CEO of the Miami Marlins.

"I love it when people doubt me. It makes me work harder to prove them wrong." –Derek Jeter

<https://www.baseball-reference.com/players/j/jeterde01.shtml>
<https://baseballhall.org/hall-of-famers/jeter-derek>

Definitions/Other Information

This model is meant to represent how Jeter did not skip a "base" during his time of leadership. He knew that if he skipped 1st base, he'd never be able to reach 3rd. The 2 words in red on the model represent the "crowd" in the stands. He had to block out all the extra noise

Leadership Model: Sarah Pearline



Maggie Nelson, Webster University



A Transformational Leader

Sarah Pearline, the 2019 Scenic Paint Charge at Hope Summer Repertory Theatre, teaches scenic design at Wayne State University, and has experience working as a scenic artist for theatres throughout the midwest and east coast. While I worked under her as an intern while she was the 2019 Scenic Paint Charge at Hope Summer Repertory Theatre, she led a work group of four through the scenic painting of six theatrical productions, taught workshops for the interns and young staff members, gave her work group members individualized opportunities to learn and grow, and empowered the group to participate in/learn from her decision-making process.

Influence

All of Sarah's followers were on the participant-activist spectrum according to Kellerman's Followership Typology. They were young, ready and willing to work, and all had some painting experience but were still learning. They all cared about the success of the outcome because they were passionate about theatre, but they had limits because they were being paid only a modest stipend for their work. Through her skill, strong leadership, and genuine care for each individual group member, Sarah earned the respect of the group and compelled them to perform beyond expectations. Working with her and analyzing her leadership style has inspired me to overcome my shyness/introvertedness as I begin to lead my own work groups at Webster. I now have a better understanding of how I can form positive work relationships in my own life, and I acknowledge the importance of the human resource frame as opposed to valuing nothing but accomplishing tasks.

A Human Resource/Structural Focus

Sarah got to know each group member as an individual human being and met them where they were at. She remembered and valued everyone's goals, desires, strengths and weaknesses. For example, she knew that I wanted to become a professional scenic designer, so she gave me some drafting jobs in addition to painting. Another group member wanted to be a professional stage manager, so Sarah used her influence to find her an assistant stage managing gig on one of the productions. Balancing the human resource frame with the structural frame, Sarah designed methods and plans for every painting project. Throughout each project, she analyzed progress and made changes to the group's process when she saw opportunity for improvement. In a group of relatively inexperienced painters, she put her knowledge to use and shared it with the group, coaching them into improvement.

Photo of Sarah



Transformational Leadership

Leadership involving an exceptional form of influence that moves followers to accomplish more than what is expected of them (Komives 76)

Kellerman's Leadership Typology

A way to describe and categorize followers by level of engagement (Komives).

Human Resource Frame

A way of thinking about leadership through the lens of the people's feelings and needs.

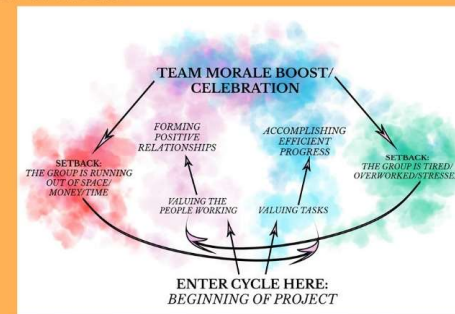
Structural Frame

A way of thinking about leadership through the lens of tasks, efficiency, and quality of work.

Original Draft Version of Model



Final Version of Model



Works Referenced

Komives, S. R., Lucas, N., & McMahon, T. R. (2013). *Exploring leadership: For college students who want to make a difference*. San Francisco: Jossey-Bass.

Mr. Rogers Leadership Model



Tavis Cameron



Introduction

Fred Rogers starred in the PBS series "Mister Rogers' Neighborhood" from 1968 to 2001. He attended Rollins College and Pittsburgh Theological Seminary. He was the host, musician, puppeteer, writer, producer and creator of the beloved show that won many awards during its time on air. Mr. Rogers was born on March 20th, 1928 and sadly passed away from Stomach cancer on February 27th, 2003, just two years after the conclusion of his beloved show. Although his show was primarily aimed for children, many difficult topics were brought up within the episodes that everyone of all ages could learn from. Mr. Rogers tackled topics like mental health, racial inequalities and disability rights, among with many others. He was the first in many regards to bring these subjects to light on television, especially in programs that so many young people watched, leaving a lasting impression on countless children, including me.

How has this person influenced You?

His approach to bringing people together and making personal connections with each of them is something I strive to be able to accomplish myself. This method was so successful in winning the hearts of those across the nation and for generations after generations. He deservedly is remembered with loving memories and a saint-like presence. It is hard to compare Mr. Rogers with other leaders since his approach and demeanor are so unique and so difficult to emulate, but if I were to become a prominent figure of authority he would be the first person I look to as an example.

Summary of Leadership Characteristics

Fred Rogers' leadership style is a very rare case. Hardly anyone else on TV or in politics goes about spreading their message and voicing their outlook in the world in such a peaceful and kind way that he does, all so subtly. Mr. Rogers left lasting impressions for over 30 years, shaping their perceptions of complex issues of the world from a young age. He is arguably the most beloved Children's TV show host of all time, and his pioneering work throughout his "neighborhood" continues to impact people today, myself included. Fred Rogers did not lead those who listened to him with anger, or fear, or power, he led generations of children using kindness, love and peace. He was a perfect example of a Human Resource oriented leader, focusing immensely on the emotions of others and making personal human connections.

Photo of your Leader



Original Draft Version

Heartwarming

- Fred Rogers responded to all of his fan mail and refused to throw away any he received, claiming that some of it saved.
- Every season Mr. Rogers wrote on the television show was hosted by his mother.
- Mr. Rogers recalled before the episode even in order to show TV shows to be hosted by MCR. He did this so that working parents could sit and watch television with their children.
- Mr. Rogers never used profanity and reportedly would only say "moo" in moments of frustration or anger.
- One of his famous seasons now resides in the Smithsonian.

Leadership Style

- Fred Rogers' leadership style is a very rare case. Hardly anyone else on TV or in politics goes about spreading their message and voicing their outlook in the world in such a peaceful and kind way that he does, all so subtly.
- Mr. Rogers left lasting impressions for over 30 years, shaping their perceptions of complex issues of the world from a young age.
- He is arguably the most beloved Children's TV show host of all time, and his pioneering work throughout his "neighborhood" continues to impact people today, myself included.
- Fred Rogers did not lead those who listened to him with anger, or fear, or power, he led generations of children using kindness, love and peace.

Approach

- Mr. Rogers was not forward in his approach to teaching children important lessons. He gradually and seamlessly would combine the features, storylines, wonder of his show with his own statements and raising awareness.
- Here are two clips from only have to watch the beginning which show the calm, subtle, yet impactful ways in which Mr. Rogers informed young people on sensitive topics which not many were discussing at the time.

<https://youtu.be/eR5Zyq537Xk> | <https://www.youtube.com/watch?v=6j3u3018000>

Fred McCreely Rogers

- Fred Rogers starred in the PBS series "Mister Rogers' Neighborhood" from 1968 to 2001. He was the host, musician, puppeteer, writer, producer and creator of the beloved show that won many awards during its time on air.
- Mr. Rogers was born on March 20th, 1928 and sadly passed away from Stomach cancer on February 27th, 2003, just two years after the conclusion of his show.
- Though his show was aimed for children, many difficult topics were brought up within the episodes. Mr. Rogers tackled topics like mental health, social inequality and disability rights.
- He was the first in many regards to bring these subjects to light on television, especially in programs that so many young people watched, leaving a lasting impression on countless children.

Final Version of Model

Approach

- Mr. Rogers was not forward in his approach to teaching children important lessons. He gradually and seamlessly would combine the features, storylines, wonder of his show with his own statements and raising awareness.
- Here are two clips from only have to watch the beginning which show the calm, subtle, yet impactful ways in which Mr. Rogers informed young people on sensitive topics which not many were discussing at the time.

<https://youtu.be/eR5Zyq537Xk> | <https://www.youtube.com/watch?v=6j3u3018000>

Fred McCreely Rogers

- Fred Rogers starred in the PBS series "Mister Rogers' Neighborhood" from 1968 to 2001. He was the host, musician, puppeteer, writer, producer and creator of the beloved show that won many awards during its time on air.
- Mr. Rogers was born on March 20th, 1928 and sadly passed away from Stomach cancer on February 27th, 2003, just two years after the conclusion of his show.
- Though his show was aimed for children, many difficult topics were brought up within the episodes. Mr. Rogers tackled topics like mental health, social inequality and disability rights.
- He was the first in many regards to bring these subjects to light on television, especially in programs that so many young people watched, leaving a lasting impression on countless children.

Heartwarming

- Fred Rogers responded to all of his fan mail and refused to throw away any he received, claiming they were all saved.
- Every season Mr. Rogers wrote on the television show was hosted by his mother.
- Mr. Rogers recalled before the episode even in order to show TV shows to be hosted by MCR. He did this so that working parents could sit and watch television with their children.
- Mr. Rogers never used profanity and reportedly would only say "moo" in moments of frustration or anger.
- One of his famous seasons now resides in the Smithsonian.
- Fred Rogers was an influential leader and an accomplished musician.
- He helped many famous actors like Michael Keaton get their start.

Leadership Style

- Fred Rogers' leadership style is a very rare case. Hardly anyone else on TV or in politics goes about spreading their message and voicing their outlook in the world in such a peaceful and kind way that he does, all so subtly.
- Mr. Rogers left lasting impressions for over 30 years, shaping their perceptions of complex issues of the world from a young age.
- He is arguably the most beloved Children's TV show host of all time, and his pioneering work throughout his "neighborhood" continues to impact people today, myself included.
- Fred Rogers did not lead those who listened to him with anger, or fear, or power, he led generations of children using kindness, love and peace. He was a perfect example of a Human Resource oriented leader, focusing immensely on the emotions of others and making personal human connections.



- <https://www.biography.com/performer/fred-rogers> { -<https://www.history.com/tag/mr-rogers> { -<https://www.misterrogers.org/about-fred-rogers/>